

Advanced Printer Configuration Help



Press F1 to find out about using Help

- Advanced Printer Configuration Basics
- Printing Test Pages
- Adjusting Memory Settings
- Adjusting Print Settings
- Password Protection



A Note about This Help File

Because the Advanced Printer Configuration dialog box supports both PCL and PostScript printers, some of the information in this Help file may not relate to your printer. If information pertains only to either PCL or PostScript, blue headings indicate which language is discussed.



Advanced Printer Configuration Basics

The Advanced Printer Configuration dialog box allows you to change the way your printer works by making changes to its default settings. In addition to making changes from here, you can also make changes in printer drivers and directly from your application. The Advanced Printer Configuration dialog box is designed to allow you to make settings that you change infrequently, often only once. For more commonly adjusted settings, make changes from your print driver or directly from your application.



Printing Test Pages

Built into your printer are several "test pages" which can help you determine how the printer is configured and how well it's working. The options you see depend on the type of printer you have installed. All of the possible test pages are listed below.



To Print a Test Page

- 1 From the Advanced Printer Configuration dialog box, select the test page you want to print.

The selected test page prints.

Note: A message box will be displayed for the duration of the print job since printer can not accept any configuration changes while the test page is printing.

PCL Test Pages

- **PCL Self Test Page**

Provides information about your printer's features, options, and default settings.

- **PCL Typeface List**

Prints a sample of each PCL font installed in your printer's memory as well as information about each font.

- **PCL Demo Page**

Demonstrates some of your printer's features.

PostScript Test Pages

- **PostScript Configuration Page**

Provides information about your printer's features, options, and default settings.

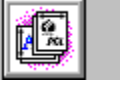
- **PostScript Typeface List**

Prints a sample of each PostScript font installed in your printer's memory as well as information about each font.

- **PostScript Demo Page**

Demonstrates some of your printer's features.





Adjusting Memory Settings

Click one of the items in the following line to scroll to printer-specific information for that printer.

[Top](#) [Common Settings](#) [PCL Settings](#) [PostScript Settings](#)

You can change several aspects of how your printer uses its memory. Note that the settings you see in the dialog box depend on the current personality of your printer.

Common Settings

IO Buffer Use this setting to decide if you want to control the amount of printer memory set aside for receiving print jobs from the computer. The more memory you set aside, the faster your printer will print. In this box, you can select from:

- Auto Printer determines the optimum amount of memory to set aside based on available memory.
- On Allows you to enter in the IO Size box the amount of memory you want to set aside.
- Off Disables IO buffering.

IO Size If IO Buffer is set to On, you can use this box to specify the amount of memory you want to set aside for IO buffering.

Available Memory The Available Memory box shows the amount of printer RAM currently not set aside for Resource Saving or IO buffering.

PCL Settings

Installed Memory This box shows you the amount of RAM currently installed in your printer.

PostScript Settings

Resource Saving Use this setting to control the amount of memory (RAM) the printer to sets aside for personality specific resources such as typefaces and macros. In this box, you can select from:

- Auto Printer determines the optimum amount of memory to allocate for each personality.
- On Allows you to enter in the PCL and PostScript boxes the amount of memory you want to set aside for each personality.
- Off Disables Resource saving.

PCL Use this box to tell the printer how much memory to set aside for the PCL personality.

PostScript Use this box to tell the printer how much memory to set aside for the PostScript personality.

Adobe MBT (Memory Booster Technology) The Adobe MBT box allows you to control the printers use of Adobe Memory Booster Technology. Adobe MBT allows you to print more complicated PostScript documents using much less of the printers memory. The following settings are available:

- Auto Automatically configures Adobe MBT for best performance. Recommended setting.
- On Adobe MBT is always on. May provide better performance for some jobs with 7-11 megabytes of printer memory installed. May provide more memory for downloading fonts.
- Off Adobe MBT is always off. May produce poor print quality with less than 7 megabytes of printer memory installed.





Adjusting Print Settings

These print settings change the way that the printer will work by default. From here, you can change the default print density and the default paper tray.

Print Density - The Print Density box allows you to set the default darkness of the print on the page. You can choose from Lightest, Lighter, Medium, Darker, or Darkest.

Paper Handling - The Paper Handling box allows you to set the printers behavior for both the Manual Feed and Auto Tray Select paper source options.

For the first (default) setting:

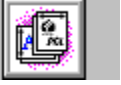
Manual Feed will automatically pull paper from Tray 1 if it is full, and wait for paper if it is empty.

Auto Tray Select will use Tray 1 until it is empty, then Tray 2.

For the second setting:

Manual Feed will prompt for paper to be loaded into Tray 1, even if it is full. You will need to press the GO button on the printer for each page.

Auto Tray Select will use Tray 2.



Password Protection

You can use password protection to ensure that unauthorized individuals do not make changes to any of your printer's default settings. If you select password protection, you will be prompted to provide a new password. Once password protection is set, no changes can be made to the printer's default settings without first providing a password. Additionally, you may change your printers password by choosing the change password button and entering the new password along with the old password for verification.



PCL

PCL stands for Hewlett-Packard's Printer Control Language. PCL consists of compact escape sequence codes that are embedded in the print job data stream. These escape sequences are used to control the features of your printer.

PostScript

PostScript is a printer language developed by Adobe Systems Inc..

Default Settings

Default settings are the settings that the printer reverts to when either the printer power is interrupted, the RESET button has been pressed, or the Restore Defaults button on your driver has been pressed. You can make changes to the printer's default settings with the Advanced Printer Configuration dialog box.

Personality

Personality is a way of referring to the printer language which is currently loaded into a printer. Examples of personalities are PCL and PostScript.

Welcome to Help for the HP Advanced Printer Configuration dialog box

The Advanced Printer Configuration dialog box allows you to change the way your printer works by making changes to its default settings.



